



Brenda Soulfire
crystal
medicine woman

Reiki Master



.....
Month 4: Reiki Level 2:
Okuden : The Practitioner

Class 8:
Start Healing Others





BRENDA

Soulfire

Soul SiStar

Mystic Circle Leader

Certified Crystal Healer

Registered Metaphysics Practitioner

Usui, Crystal and Shamanic

Reiki Master/ Teacher

Boricua Crystal Medicine Woman

Spiritual Life Coach

Healer Brand Doula

ACIM Mentor



HON SHA *Ze Sho Nen*

- Meaning: having no present, past or future
- Hon means 'the source' or 'the beginning'.
- Sha means 'illuminating dazzling energy'.
- Ze means 'to walk in the right direction'.
- Sho means 'an honest goal'
- Nen means 'developing a sense of tranquillity and stability to the subconscious mind.'



HON SHA *Ze Soho Nen*

- You are now able to give reiki beyond space and time, at a distance.
- used to transfer energy across time and space.
-
- used to heal traumatic experiences of the past, challenges of the present, and obstacles of the future
- perfected by Madame Takata
- drawn from top to bottom and left to right.
- Seen from a particular angle, the characters of the symbol appear to reflect the human body, the five Chakras, and the elements within
- also used to send positive energy to friends and family who live far away
- send reiki to groups
- release pent up hurt energy, or stuck energy from the past



HON SHA Ze Soho Nen

Used for

- emotional healing
- past trauma
- betterment of the future
- release emotions
- heal across time and space
- align chakras quickly
- access Akashic Records
- understanding books/artworks
- quick energy transfer/reiki ray
- removing residual energy
- quick revitalize
- inner clarity
- amplify your medicine powers
- heal groups
- DNA tribe healing ancestry healing



本有念

CHIRYO

clearing

- Chiryō means treatment, it is the interplay of using your intuition and the awareness of reiki energy flowing through your body
- Clearing yourself before treatment of others is important. The clearer the channel, the clearer the healing.
- Clear yourself and let intuition awaken in you 15 minutes before your session.
- Chiryō is performed by the practitioner holding their dominant hand above the client's crown chakra and waiting until there is a signal to move, which the hand then follows. The Reiki practitioner continues to use their intuition with regard to hand placement until they are called to end the session.
- Chiryō is that moment of shift, of the miracle, the shift from fear to love, to listening with the heart, that indication that you are now under clear divine guidance.



REIKI *session prep*

Summary

- 1. Gassho (informal) - palms in prayer position in front of heart center and head lowered. You can do this in your mind or physically at the start of a session or meditation.
- 2. Reiji-Ho - you will draw Reiki in through you and use the symbols to help you clear yourself in preparation for the session. You can raise your hands to your third eye and set the intention that the client/recipient will draw in Reiki energy to help them clear any imbalances. You will ask to receive guidance during the session and trust that your hands will go where needed.
- 3. Chiryō - you can then move to the client's crown chakra and place your dominant hand over the area. When you feel called to move to the next position you will do so and conduct the session.
- Essentially it is clearing, setting an intention and then releasing expectations, control and witnessing the session



YOUR *invocation*

.....

Your Invocation is how you call reiki in, it becomes your call to Spirit. Practice it, build it and feel it. Fill it with your favorite spiritual people entities and intentions. Get in the right mindset and intention with it! Know that the clearer the channel the clearer the healing. Intention is key and your words to call Spirit are yours and yours alone. They should vibrate your beliefs.

1. Take 3 deep breaths.
2. Bring yourself into the Now
3. Place hands in Gassho prayer position
4. Clear mind and emotional bodies
5. Call in your guides, Reiki lineage et al.
6. State intention, highest good
7. Call in the Light, Higher Source, as you see it place yourself as a clear channel 3 times
8. Go deeper into your heart, light your heart
9. Wait for reiki to flow
10. Chiryō

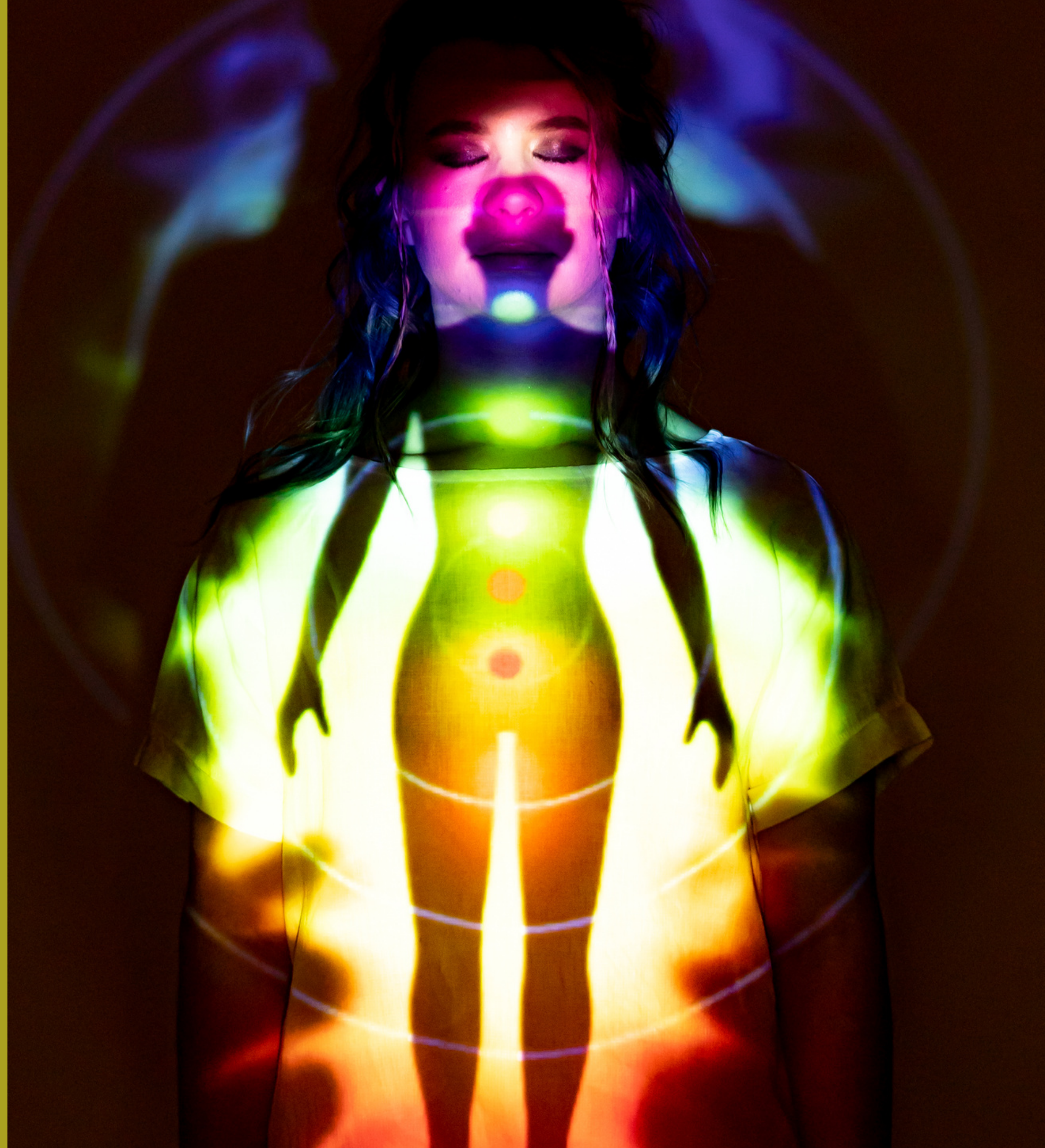


YOUR *invocation*

.....

Journaling Prompts to build your invocation:

- What do I truly believe in?
- Who do I feel safe and warm to call in to help me with my healings?
- Who are my guides?
- Who do I pray to?
- What is my mission here on Earth?
- What is my magic like? What element?
- What forces/energies do you want to call in?
- What is my highest intention when I help another heal?
- How do I want to make sure I am in alignment and in the now, Chiryo clearing?
- Who am I?
- Where am I going?
- What is my highest intention?



CHANNELING *reiki*

Channeling Reiki for Others is

- Surrender
- Radical Acceptance
- Keen observation
- Seeing the whole in all its parts
- Holographic mind
- Engage your cells in the lighting up process
- Engage all 4 parts of yourself:
 - mind, body, spirit, emotions in the process
 - trust what you are getting, the jigsaw pieces will come in due time
 - becoming more and more attuned to energy signatures
 - going deeper into your clairs
 - stepping into the river of peace
 - becoming a human radio, a prism of information, an oracle tht decyphers
 - aids include crystals, sounds, smells
 - but nothing substitutes a daily spiritual practice!



SETTING UP

Sacred Space

Setting up your sacred healing space is vital to your energy healing work

You want to build sacred space like layers and cover easy and harmony and flow in all states: mental, emotional, spiritual and physical

Be aware of how you layer, but not overcrowd your clients with:

- Light
- Sounds
- Smells
- Light touch
- Taste



SETTING UP

Sacred Space

Setting up your sacred healing space is vital to your energy healing work

You want to build sacred space like layers and cover easy and harmony and flow in all states: mental, emotional, spiritual and physical

Be aware of how you layer, but not overcrowd your clients with:

- Light
- Sounds
- Smells
- Light touch
- Taste



STEP BY STEP *reiki session*

Step by Step Reiki Session for Others

1. Intake form/talk
2. Relax/ Set tone/ light music
3. Invocation
4. Reiji-Ho Indication that reiki is flowing
5. Chiryō -treatment
6. full reiki session is each chakra front and back
7. do energy work work and
8. seal aura with reiki
9. tap on floor 3 times
10. this reiki session is now complete
11. allow for client to land back in body
12. share what came through
13. give recommendations



TIPS FOR FIRST TIME *reiki session*

.....
Whatever each of you feels is correct

Trust!

Jot down feels, nudges, visuals, inner seeing/or record

Pure intention set in the heart

Completely be there for this person

Trust that you are both healing! What they come to heal you are ready to heal in yourself

Make it fun!

Do what feels fun, joyful, creative, curious, sparkly. Follow the joy!

TRUST





REIKI TIME!



OM WORK - CLASS 8

.....

Reiki Master Certification

- Read up to Chapter 9 of Reiki textbook.
- Make art with Hon Sha Ze Sho Nen.
- Write down your invocation. Share in FB Group.
- Reiki everything.
- Enjoy your holidays!

CRYSTAL BLESSINGS!



STAY CONNECTED

Email me at soulfirehealer@gmail.com

Visit my website at

www.brendasoulfire.com



Brenda Soulfire
crystal vibeshifter